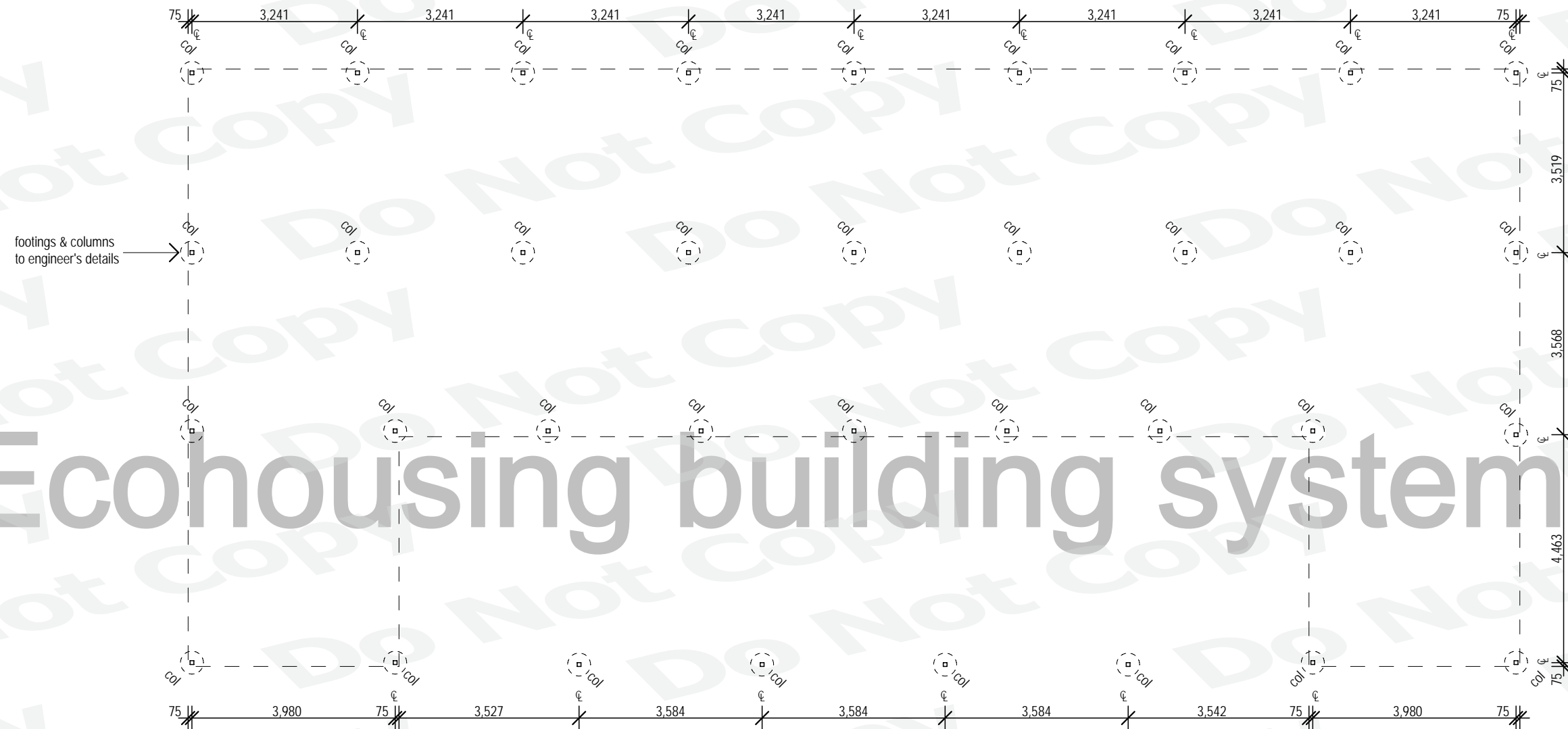


# Ecohousing building systems



**POST & FOOTING LAYOUT PLAN**  
SCALE 1:100

**PRELIMINARY**  
FOR DISCUSSION ONLY  
ISSUE DATE: 05/11/09

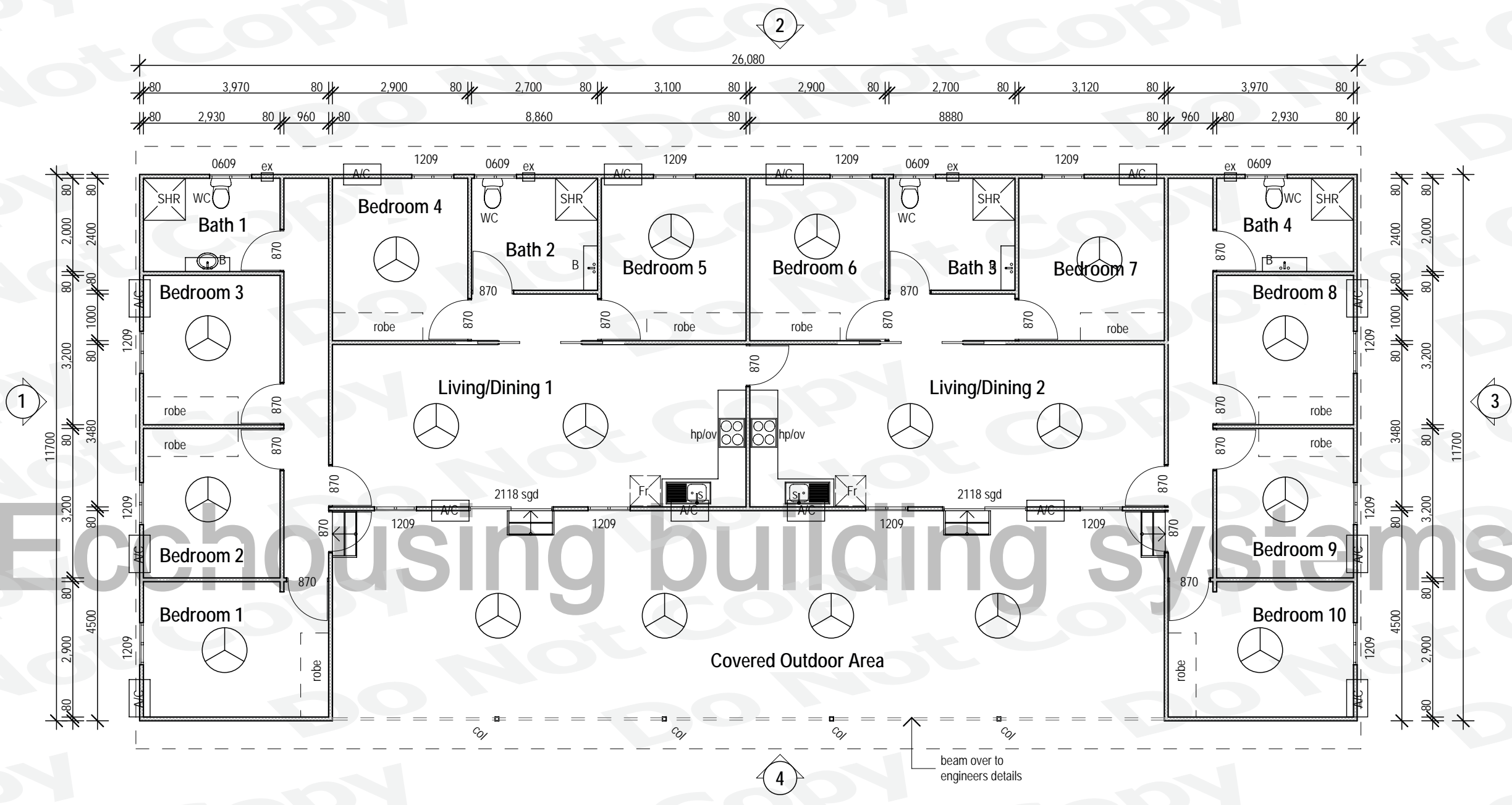
- GENERAL NOTES:**
- All drawings to be read in with reference to Australian Standards, engineer's specifications and manufacturer's literature where required.
  - All work to comply with the Queensland Building Act 1975, local codes & BCA
  - Figured dimensions take precedence, DO NOT SCALE. If in doubt, ASK
  - All enquiries & reports of inconsistencies to be directed through Ecohousing head office



Goldchill Pty Ltd T/As Ecohousing  
PO Box 803 Maroochydore QLD 4558  
Ph: 07 5456 2111  
Fx: 07 54562666  
© 2006 Goldchill Pty Ltd

**MULTI LIVING ACCOMMODATION**

#	DESCRIPTION	DATE	<b>POST &amp; FOOTING LAYOUT PLAN</b>	
A	PRELIMINARY ISSUE	05/11/09	Scale AS SHOWN	Drawn : CD
			Date	Checked: TB
			<b>ECO</b>	<b>- 02</b>



**FLOOR PLAN**  
SCALE 1:100

**PRELIMINARY**  
FOR DISCUSSION ONLY  
ISSUE DATE: 05/11/09

- GENERAL NOTES:**
- All drawings to be read in with reference to Australian Standards, engineer's specifications and manufacturer's literature where required.
  - All work to comply with the Queensland Building Act 1975, local codes & BCA
  - Figured dimensions take precedence, DO NOT SCALE. If in doubt, ASK
  - All enquiries & reports of inconsistencies to be directed through Ecohousing head office

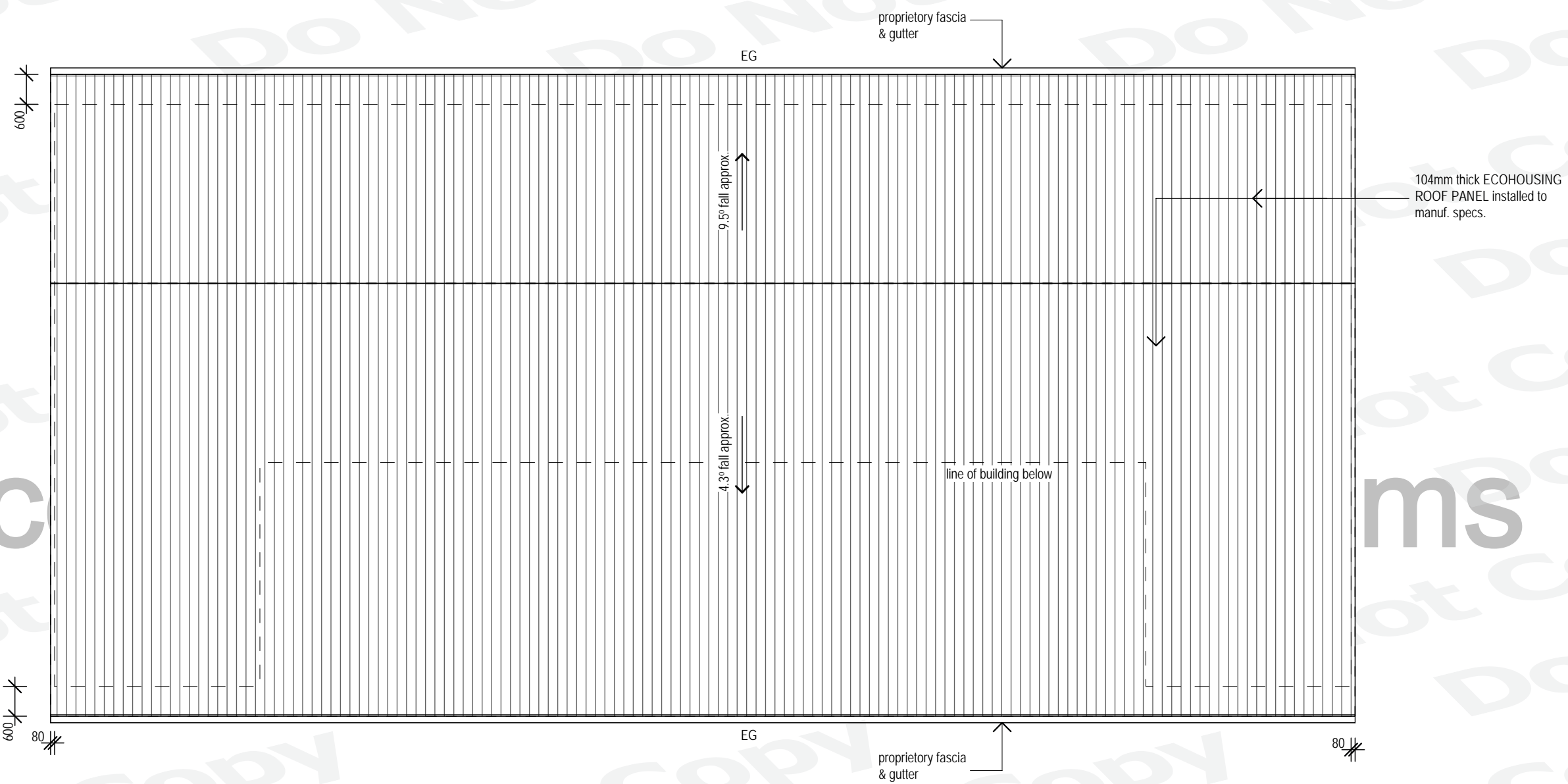


Goldchill Pty Ltd T/As Ecohousing  
PO Box 803 Maroochydore QLD 4558  
Ph: 07 5456 2111  
Fx: 07 54562666  
© 2006 Goldchill Pty Ltd

**MULTI LIVING ACCOMMODATION**

#	DESCRIPTION	DATE
A	PRELIMINARY ISSUE	05/11/09

**FLOOR PLAN**  
Scale AS SHOWN  
Date  
Drawn : CD  
Checked: TB



**ROOF PLAN**  
SCALE 1:100

**PRELIMINARY**  
FOR DISCUSSION ONLY  
ISSUE DATE: 05/11/09

- GENERAL NOTES:**
- All drawings to be read in with reference to Australian Standards, engineer's specifications and manufacturer's literature where required.
  - All work to comply with the Queensland Building Act 1975, local codes & BCA
  - Figured dimensions take precedence, DO NOT SCALE. If in doubt, ASK
  - All enquiries & reports of inconsistencies to be directed through Ecohousing head office

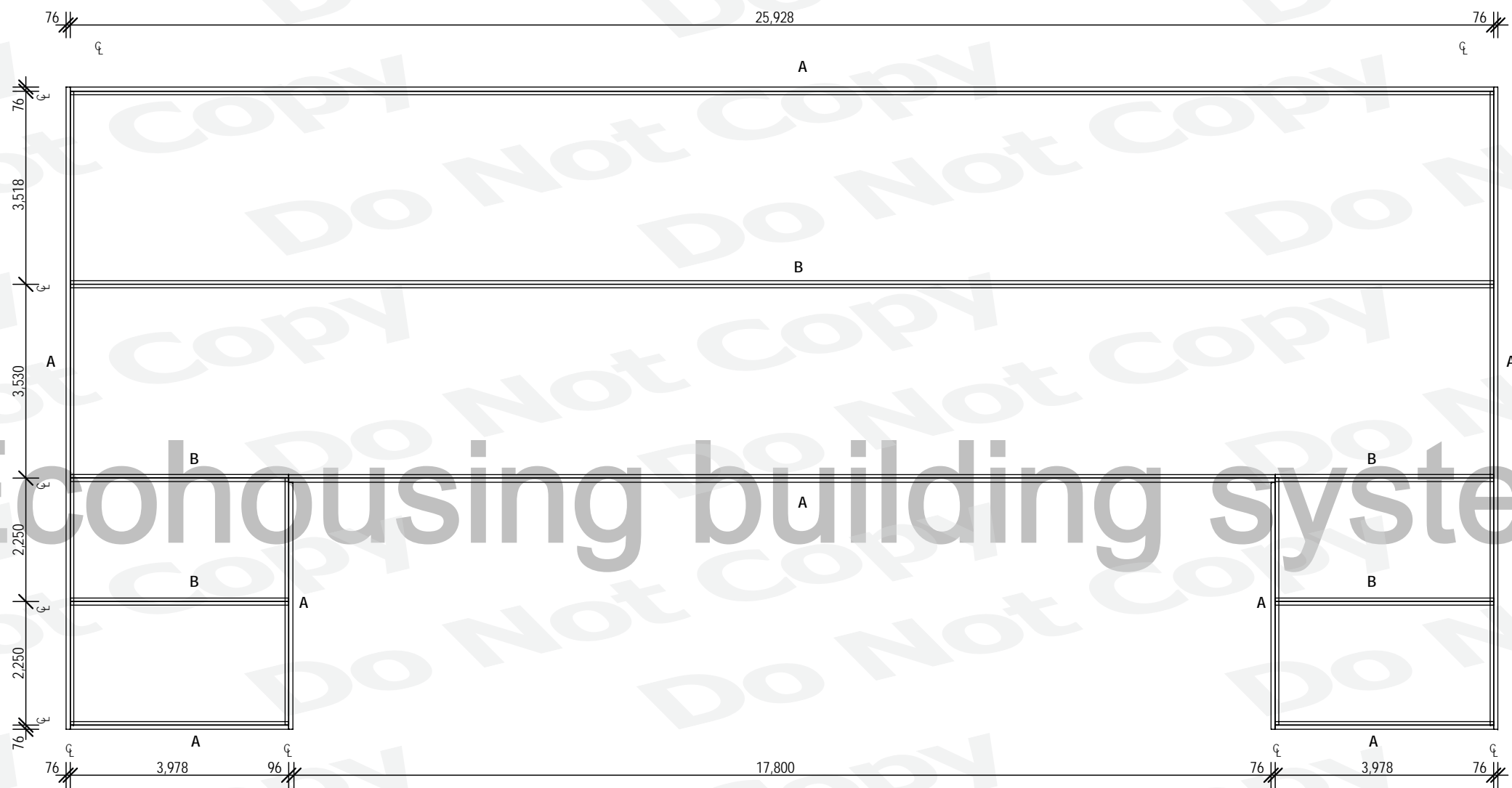
**Ecohousing Building Systems**  
Goldchill Pty Ltd T/As Ecohousing  
PO Box 803 Maroochydore QLD 4558  
Ph: 07 5456 2111  
Fx: 07 54562666  
© 2006 Goldchill Pty Ltd

**MULTI LIVING ACCOMMODATION**

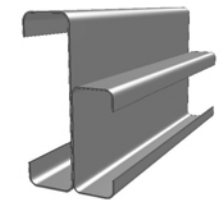
#	DESCRIPTION	DATE
A	PRELIMINARY ISSUE	05/11/09

**ROOF PLAN**  
Scale AS SHOWN  
Date  
Drawn : CD  
Checked: TB

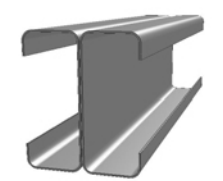
**ECO - 04**



**A**  
C250/C150



**B**  
C150/C150



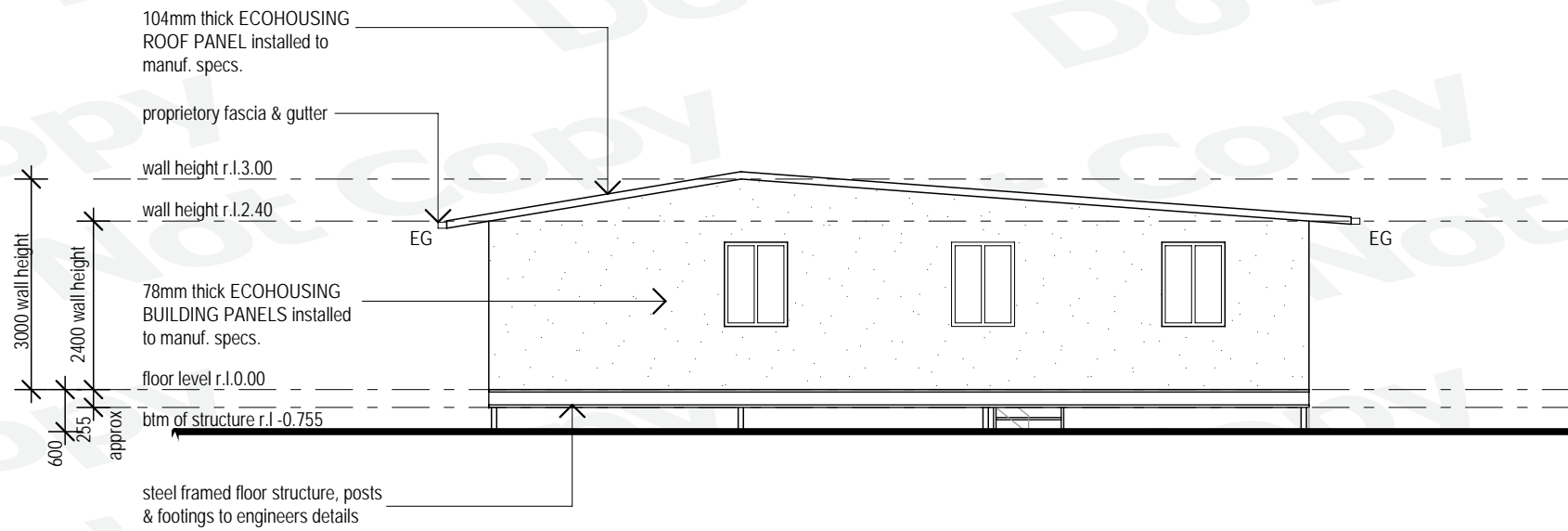
NOTE: MEMBER SIZES TO BE  
READ IN CONJUNCTION WITH  
ENGINEERS DRAWINGS & DETAILS

**BEARER LAYOUT PLAN**  
SCALE 1:100

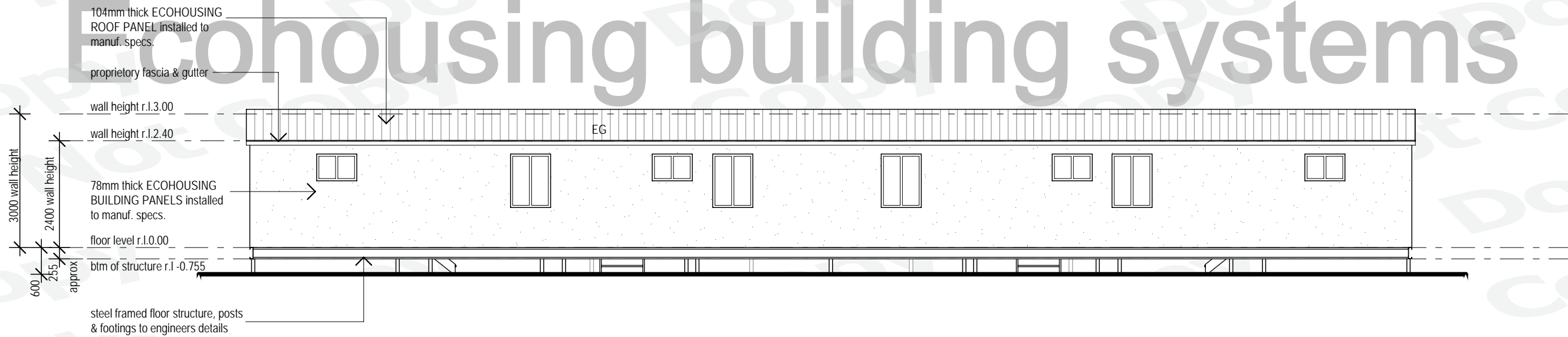
**PRELIMINARY**  
FOR DISCUSSION ONLY  
ISSUE DATE: 05/11/09

- GENERAL NOTES:
- All drawings to be read in with reference to Australian Standards, engineer's specifications and manufacturer's literature where required.
  - All work to comply with the Queensland Building Act 1975, local codes & BCA
  - Figured dimensions take precedence, DO NOT SCALE. If in doubt, ASK
  - All enquiries & reports of inconsistencies to be directed through Ecohousing head office

	Goldchill Pty Ltd T/As Ecohousing PO Box 803 Maroochydore QLD 4558 Ph: 07 5456 2111 Fx: 07 54562666 © 2006 Goldchill Pty Ltd	<b>MULTI LIVING ACCOMMODATION</b>	# DESCRIPTION DATE	<b>BEARER LAYOUT PLAN</b> Scale AS SHOWN Drawn : CD Date Checked: TB
				<b>ECO - 05</b>
			REVISIONS A PRELIMINARY ISSUE 05/11/09	



**ELEVATION 1**  
SCALE 1:100



**ELEVATION 2**  
SCALE 1:100

# Ecohousing building systems

- GENERAL NOTES:**
- All drawings to be read in with reference to Australian Standards, engineer's specifications and manufacturer's literature where required.
  - All work to comply with the Queensland Building Act 1975, local codes & BCA
  - Figured dimensions take precedence, DO NOT SCALE. If in doubt, ASK
  - All enquiries & reports of inconsistencies to be directed through Ecohousing head office

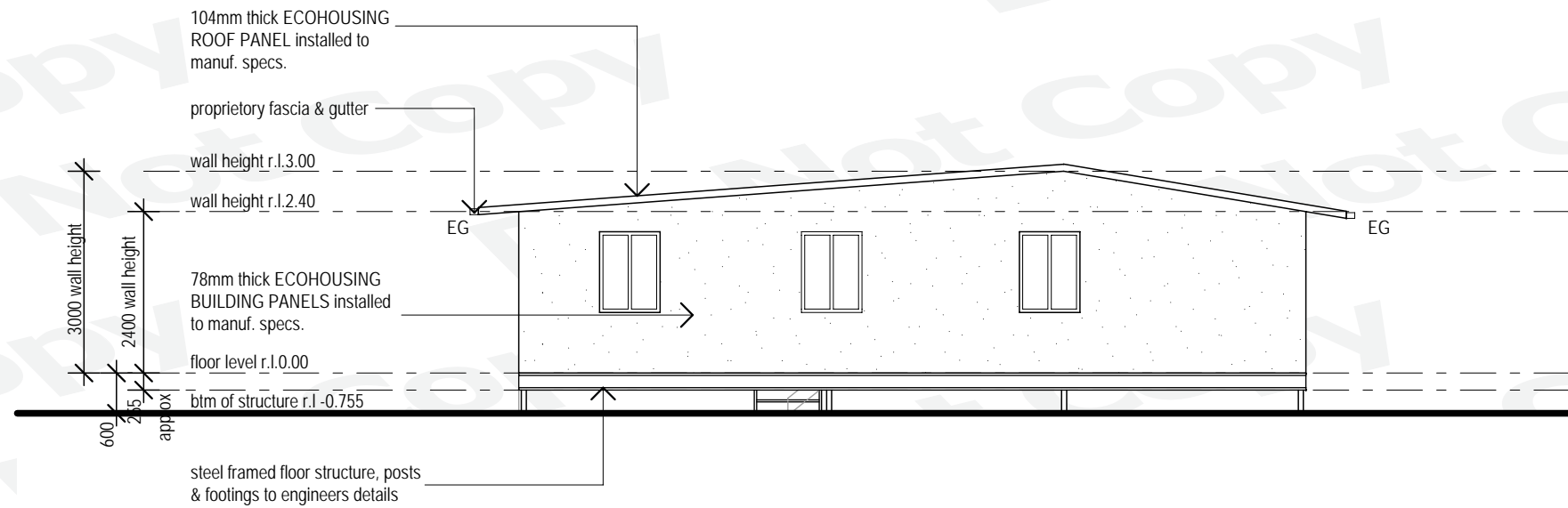
**PRELIMINARY**  
FOR DISCUSSION ONLY  
ISSUE DATE: 05/11/09



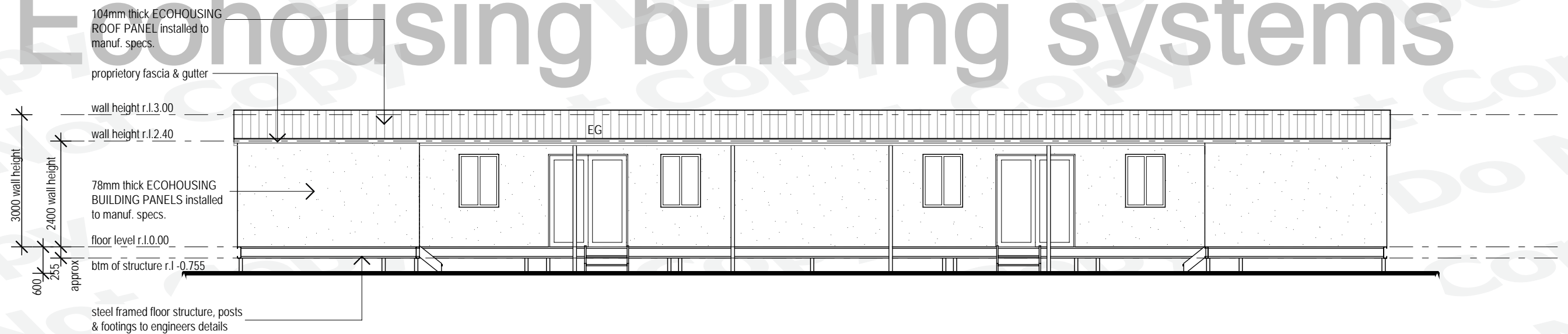
Goldchill Pty Ltd T/As Ecohousing  
PO Box 803 Maroochydore QLD 4558  
Ph: 07 5456 2111  
Fx: 07 54562666  
© 2006 Goldchill Pty Ltd

**MULTI LIVING ACCOMMODATION**

REVISIONS	#	DESCRIPTION	DATE	ELEVATIONS
	A	PRELIMINARY ISSUE	05/11/09	
				Drawn : CD Checked: TB
				<b>ECO - 06</b>



**ELEVATION 3**  
SCALE 1:100



**ELEVATION 4**  
SCALE 1:100

# Ecohousing building systems

**PRELIMINARY**  
FOR DISCUSSION ONLY  
ISSUE DATE: 05/11/09

- GENERAL NOTES:**
- All drawings to be read in with reference to Australian Standards, engineer's specifications and manufacturer's literature where required.
  - All work to comply with the Queensland Building Act 1975, local codes & BCA
  - Figured dimensions take precedence, DO NOT SCALE. If in doubt, ASK
  - All enquiries & reports of inconsistencies to be directed through Ecohousing head office



Goldchill Pty Ltd T/As Ecohousing  
PO Box 803 Maroochydore QLD 4558  
Ph: 07 5456 2111  
Fx: 07 54562666  
© 2006 Goldchill Pty Ltd

**MULTI LIVING ACCOMMODATION**

#	DESCRIPTION	DATE	ELEVATIONS
A	PRELIMINARY ISSUE	05/11/09	Scale AS SHOWN Date
			Drawn : CD Checked: TB
			<b>ECO - 07</b>