

**FLOOR PLAN**  
SCALE 1:100

**PRELIMINARY**  
FOR DISCUSSION ONLY  
ISSUE DATE: 13/01/10

- GENERAL NOTES:**
- All drawings to be read in with reference to Australian Standards, engineer's specifications and manufacturer's literature where required.
  - All work to comply with the Queensland Building Act 1975, local codes & BCA
  - Figured dimensions take precedence, DO NOT SCALE. If in doubt, ASK
  - All enquiries & reports of inconsistencies to be directed through Ecohousing head office

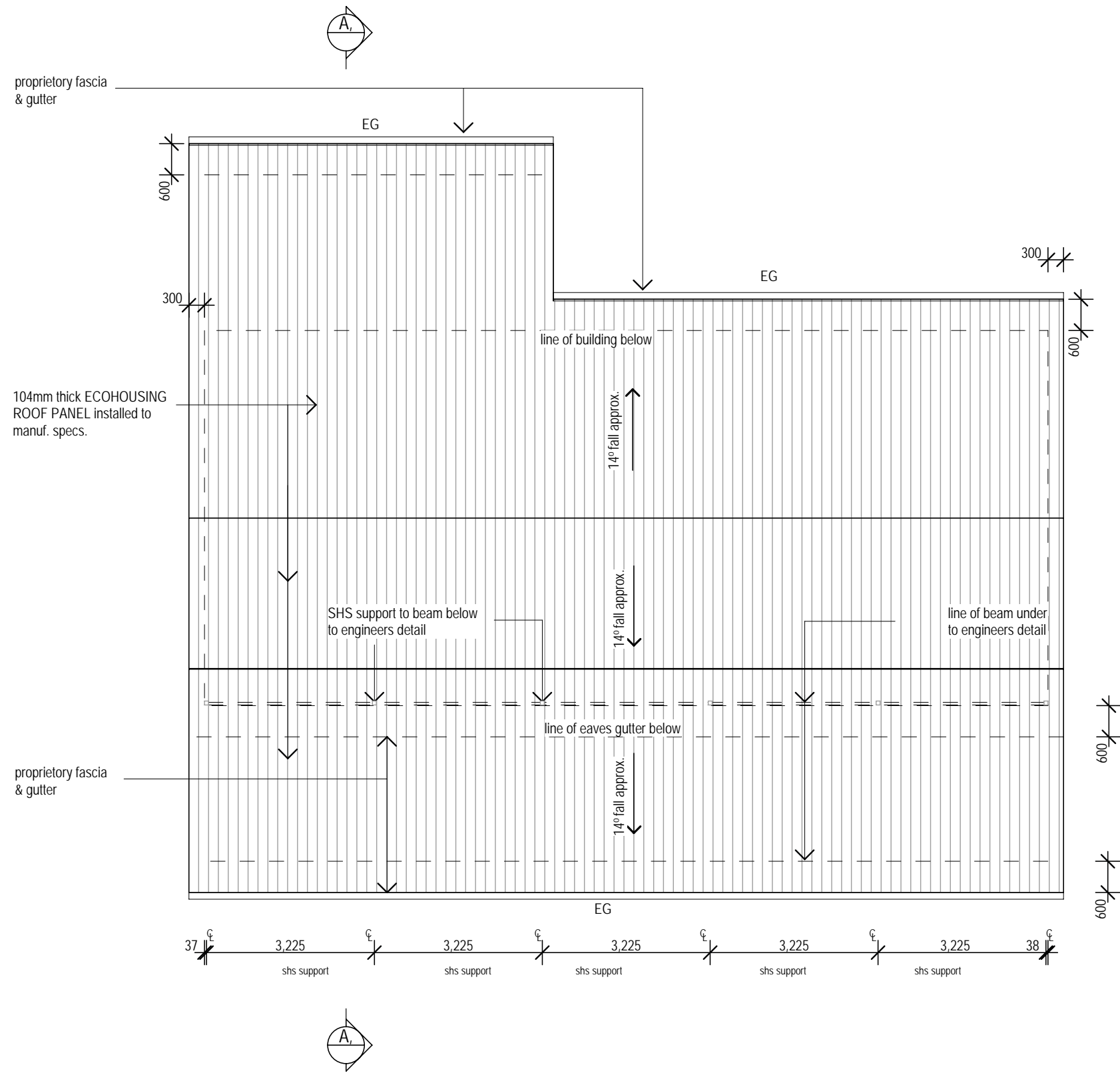


Goldchill Pty Ltd T/As Ecohousing  
PO Box 803 Maroochydore QLD 4558  
Ph: 07 5456 2111  
Fx: 07 54562666  
© 2006 Goldchill Pty Ltd

**PROPOSED OFFICE/DISPLAY HOUSE**  
NEW CALEDONIA

#	DESCRIPTION	DATE
P4	PRELIMINARY ISSUE, ENGINEERS DISC	20/12/09
P5	PRELIMINARY ISSUE,	13/01/10

**FLOOR PLAN**  
Scale AS SHOWN  
Date  
Drawn : CD  
Checked: TB



**ROOF PLAN**  
SCALE 1:100

**PRELIMINARY**  
FOR DISCUSSION ONLY  
ISSUE DATE: 13/01/10

- GENERAL NOTES:**
- All drawings to be read in with reference to Australian Standards, engineer's specifications and manufacturer's literature where required.
  - All work to comply with the Queensland Building Act 1975, local codes & BCA
  - Figured dimensions take precedence, DO NOT SCALE. If in doubt, ASK
  - All enquiries & reports of inconsistencies to be directed through Ecohousing head office

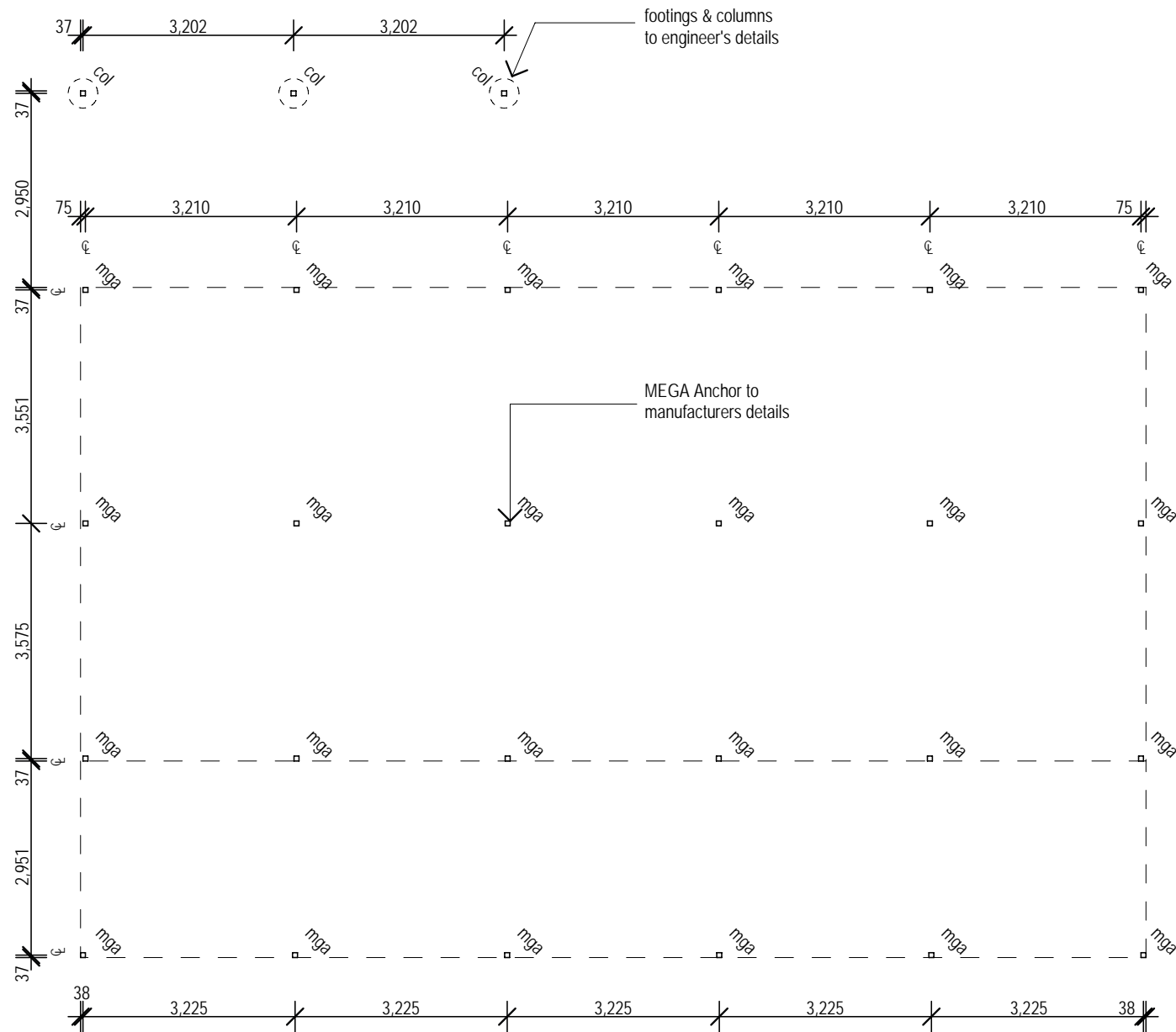


Goldchill Pty Ltd T/As Ecohousing  
PO Box 803 Maroochydore QLD 4558  
Ph: 07 5456 2111  
Fx: 07 54562666  
© 2006 Goldchill Pty Ltd

**PROPOSED OFFICE/DISPLAY HOUSE**  
NEW CALEDONIA

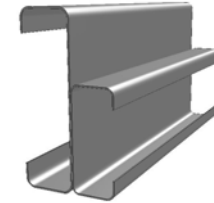
#	DESCRIPTION	DATE
P4	PRELIMINARY ISSUE, ENGINEERS DISC	20/12/09
P5	PRELIMINARY ISSUE,	13/01/10

**ROOF PLAN**  
Scale AS SHOWN  
Date  
Drawn : CD  
Checked: TB

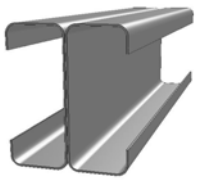


**POST & FOOTING LAYOUT PLAN**  
SCALE 1:100

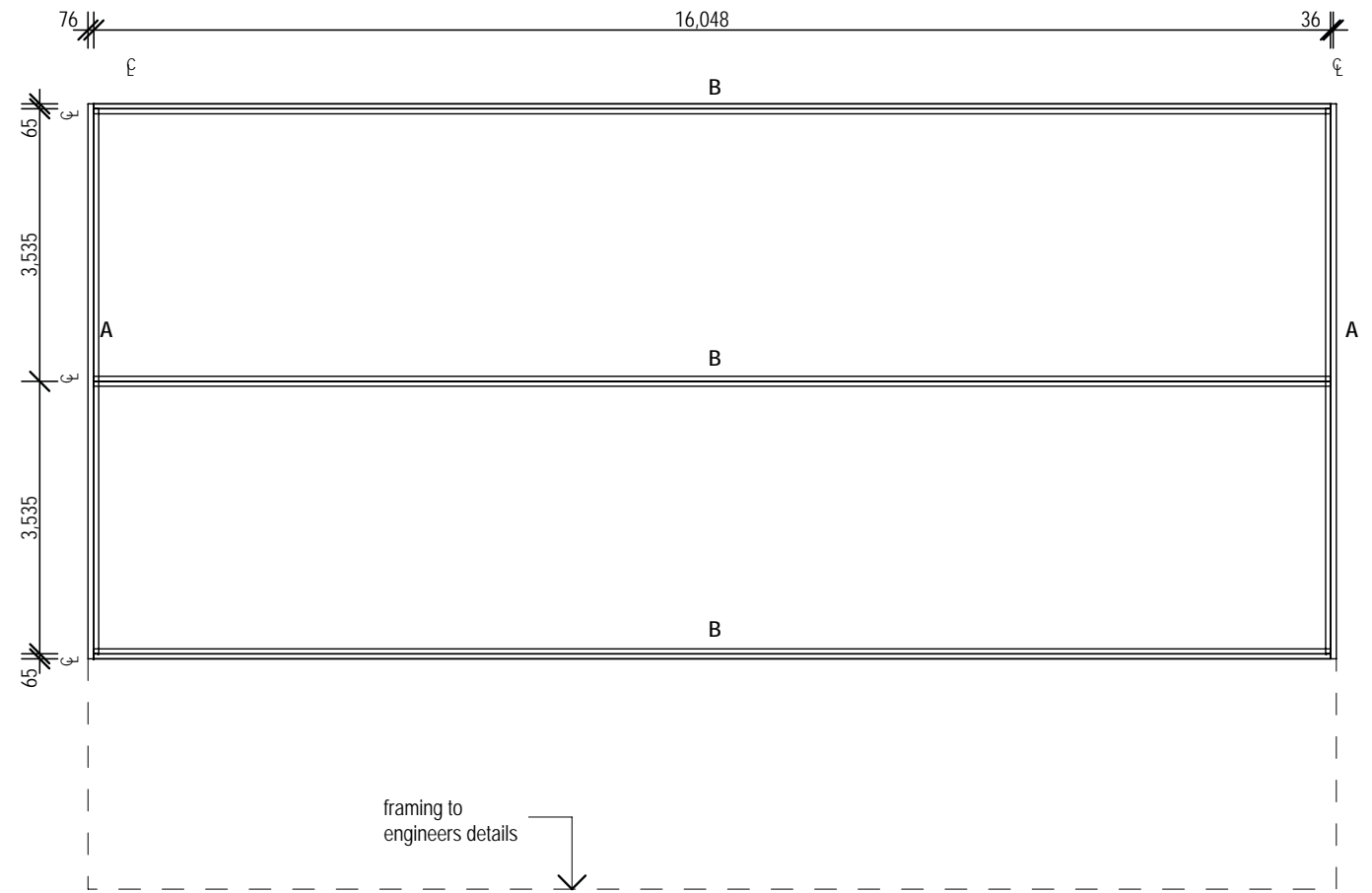
**A**  
C250/C150



**B**  
C150/C150



NOTE: MEMBER SIZES TO BE READ IN CONJUNCTION WITH ENGINEERS DRAWINGS & DETAILS



**BEARER LAYOUT PLAN**  
SCALE 1:100

**PRELIMINARY**  
FOR DISCUSSION ONLY  
ISSUE DATE: 13/01/10

- GENERAL NOTES:
- All drawings to be read in with reference to Australian Standards, engineer's specifications and manufacturer's literature where required.
  - All work to comply with the Queensland Building Act 1975, local codes & BCA
  - Figured dimensions take precedence, DO NOT SCALE. If in doubt, ASK
  - All enquiries & reports of inconsistencies to be directed through Ecohousing head office

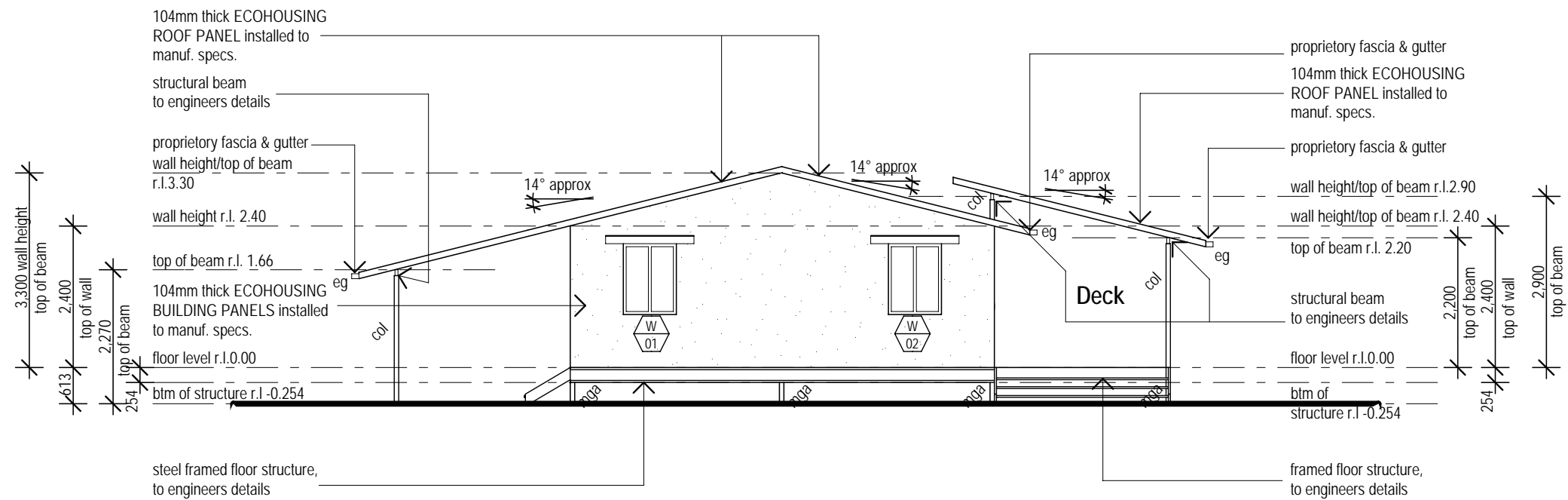


Goldchill Pty Ltd T/As Ecohousing  
PO Box 803 Maroochydore QLD 4558  
Ph: 07 5456 2111  
Fx: 07 54562666  
© 2006 Goldchill Pty Ltd

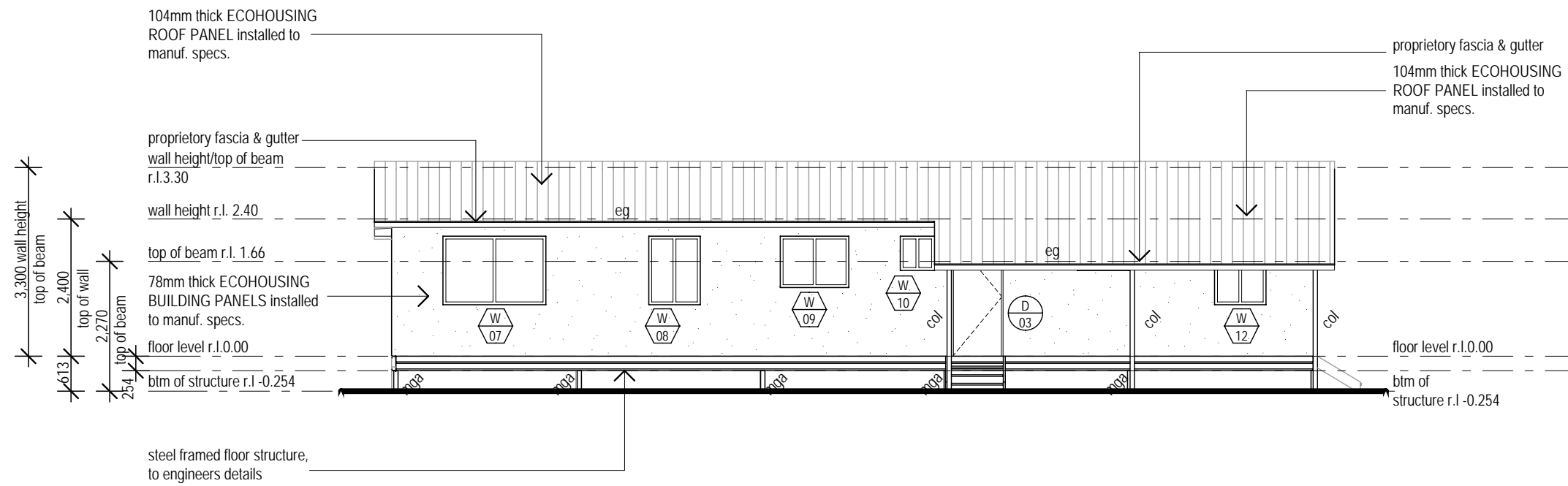
**PROPOSED OFFICE/DISPLAY HOUSE**  
NEW CALEDONIA

#	DESCRIPTION	DATE
P4	PRELIMINARY ISSUE, ENGINEERS DISC	20/12/09
P5	PRELIMINARY ISSUE,	13/01/10

**POST & BEARER PLAN**  
Scale AS SHOWN Drawn : CD  
Date Checked: TB



**ELEVATION 1**  
SCALE 1:100



**ELEVATION 2**  
SCALE 1:100

**PRELIMINARY**  
FOR DISCUSSION ONLY  
ISSUE DATE: 13/01/10

- GENERAL NOTES:**
- All drawings to be read in with reference to Australian Standards, engineer's specifications and manufacturer's literature where required.
  - All work to comply with the Queensland Building Act 1975, local codes & BCA
  - Figured dimensions take precedence, DO NOT SCALE. If in doubt, ASK
  - All enquiries & reports of inconsistencies to be directed through Ecohousing head office

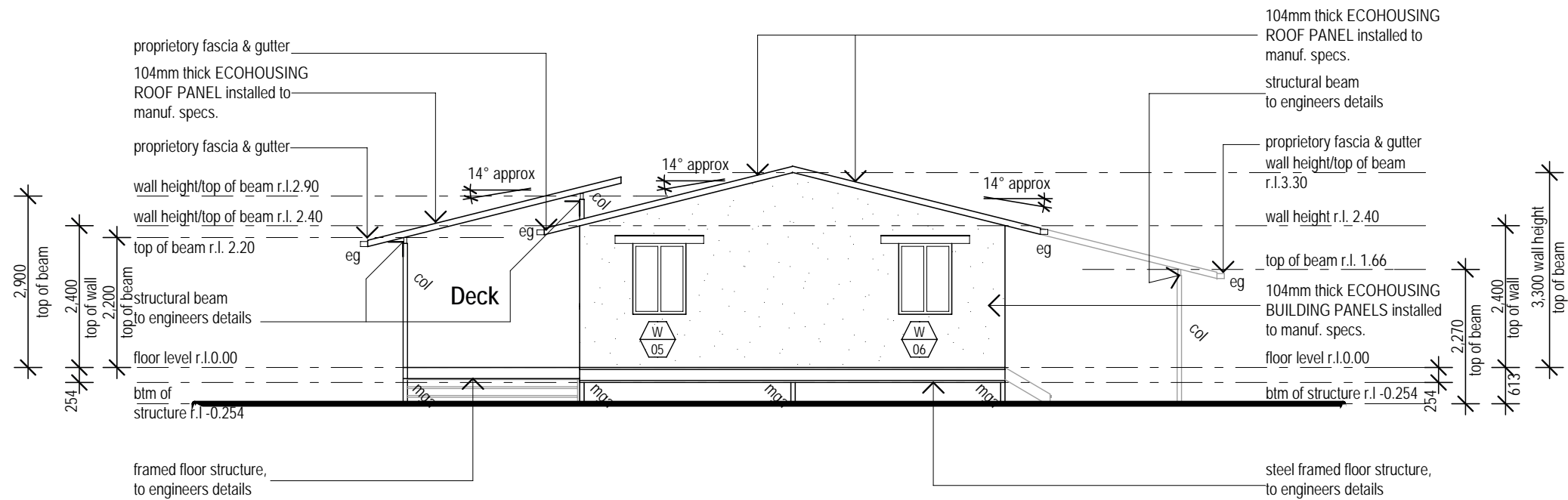


Goldchill Pty Ltd T/As Ecohousing  
PO Box 803 Maroochydore QLD 4558  
Ph: 07 5456 2111  
Fx: 07 54562666  
© 2006 Goldchill Pty Ltd

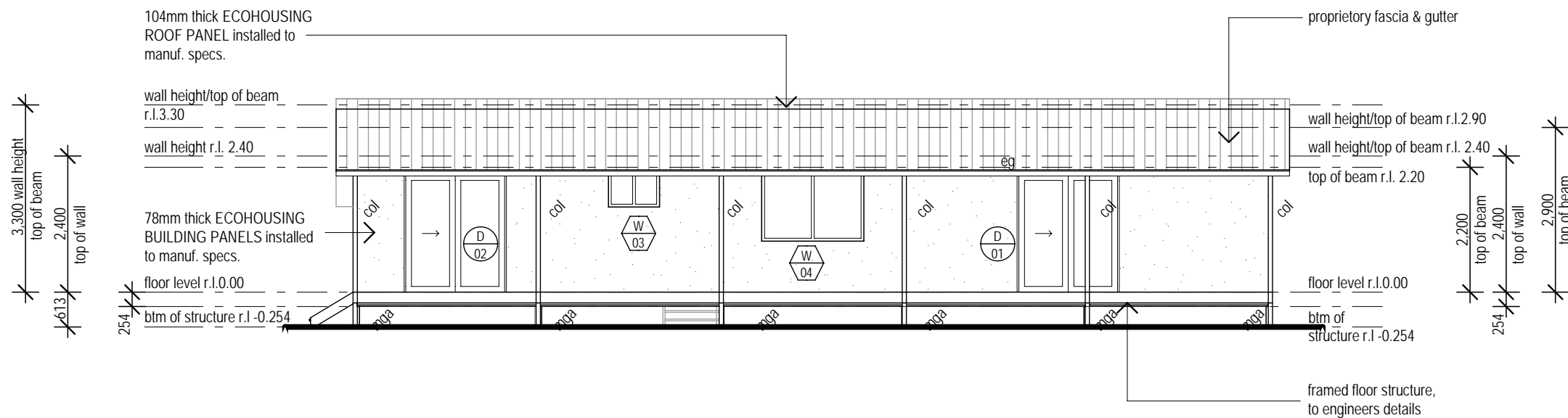
**PROPOSED OFFICE/DISPLAY HOUSE**  
NEW CALEDONIA

#	DESCRIPTION	DATE
P4	PRELIMINARY ISSUE, ENGINEERS DISC	20/12/09
P5	PRELIMINARY ISSUE,	13/01/10

**ELEVATIONS**  
Scale AS SHOWN  
Date  
Drawn : CD  
Checked: TB



**ELEVATION 3**  
SCALE 1:100



**ELEVATION 4**  
SCALE 1:100

**PRELIMINARY**  
FOR DISCUSSION ONLY  
ISSUE DATE: 13/01/10

- GENERAL NOTES:**
- All drawings to be read in with reference to Australian Standards, engineer's specifications and manufacturer's literature where required.
  - All work to comply with the Queensland Building Act 1975, local codes & BCA
  - Figured dimensions take precedence, DO NOT SCALE. If in doubt, ASK
  - All enquiries & reports of inconsistencies to be directed through Ecohousing head office

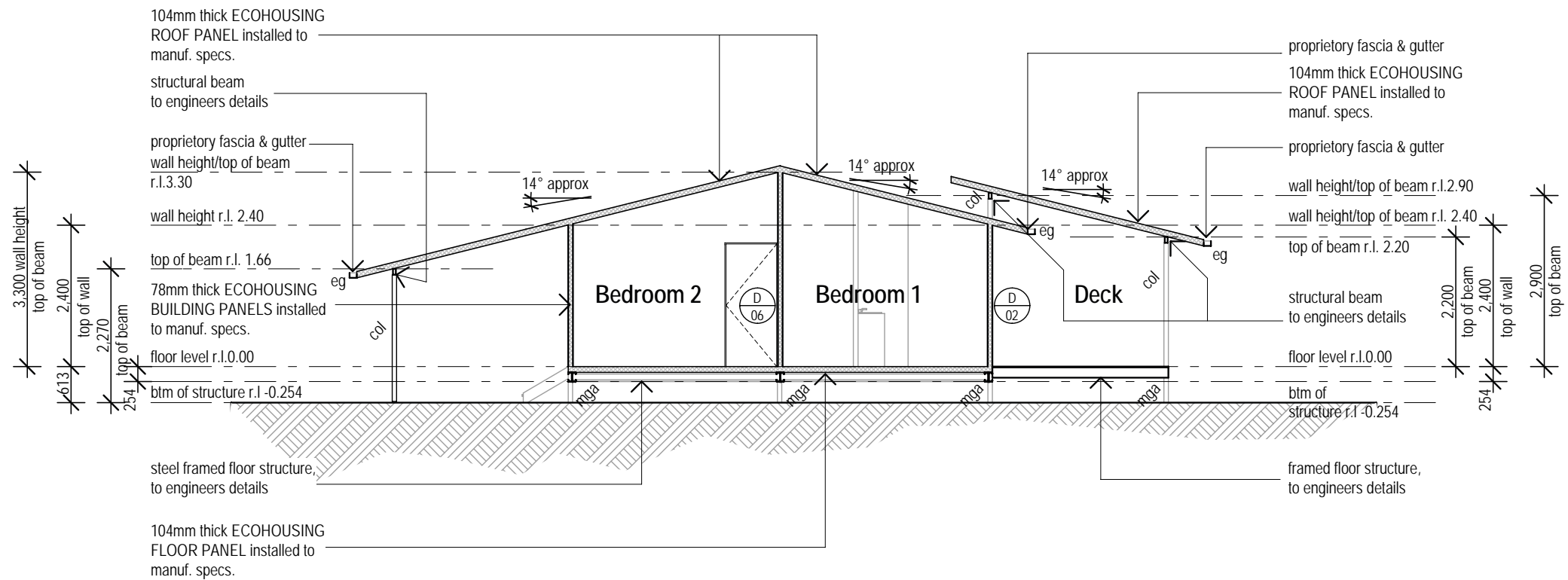


Goldchill Pty Ltd T/As Ecohousing  
 PO Box 803 Maroochydore QLD 4558  
 Ph: 07 5456 2111  
 Fx: 07 54562666  
 © 2006 Goldchill Pty Ltd

**PROPOSED OFFICE/DISPLAY HOUSE**  
NEW CALEDONIA

#	DESCRIPTION	DATE
P4	PRELIMINARY ISSUE, ENGINEERS DISC	20/12/09
P5	PRELIMINARY ISSUE,	13/01/10

**ELEVATIONS**  
 Scale AS SHOWN  
 Date  
 Drawn : CD  
 Checked: TB



**SECTION A-A**  
SCALE 1:100

**PRELIMINARY**  
FOR DISCUSSION ONLY  
ISSUE DATE: 13/01/10

- GENERAL NOTES:**
- All drawings to be read in with reference to Australian Standards, engineer's specifications and manufacturer's literature where required.
  - All work to comply with the Queensland Building Act 1975, local codes & BCA
  - Figured dimensions take precedence, DO NOT SCALE. If in doubt, ASK
  - All enquiries & reports of inconsistencies to be directed through Ecohousing head office

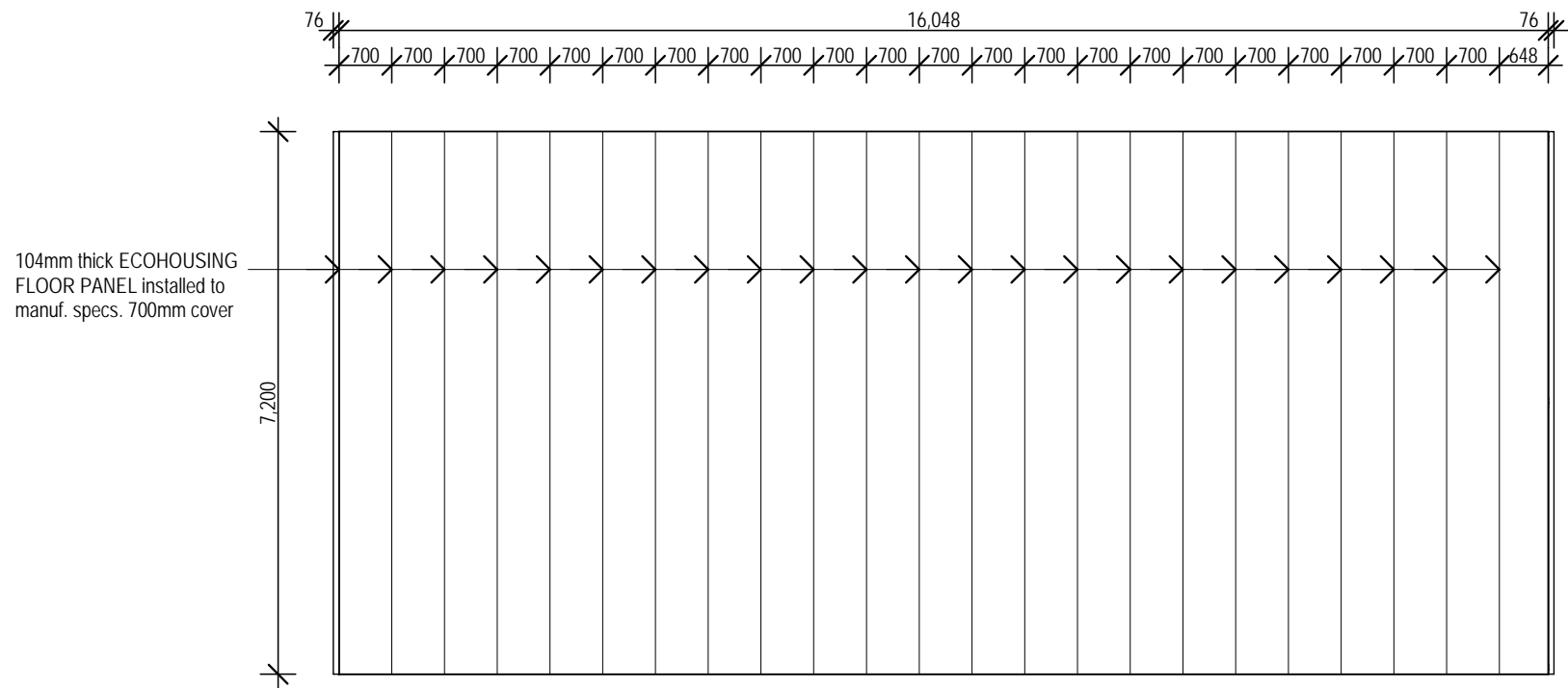


Goldchill Pty Ltd T/As Ecohousing  
PO Box 803 Maroochydore QLD 4558  
Ph: 07 5456 2111  
Fx: 07 54562666  
© 2006 Goldchill Pty Ltd

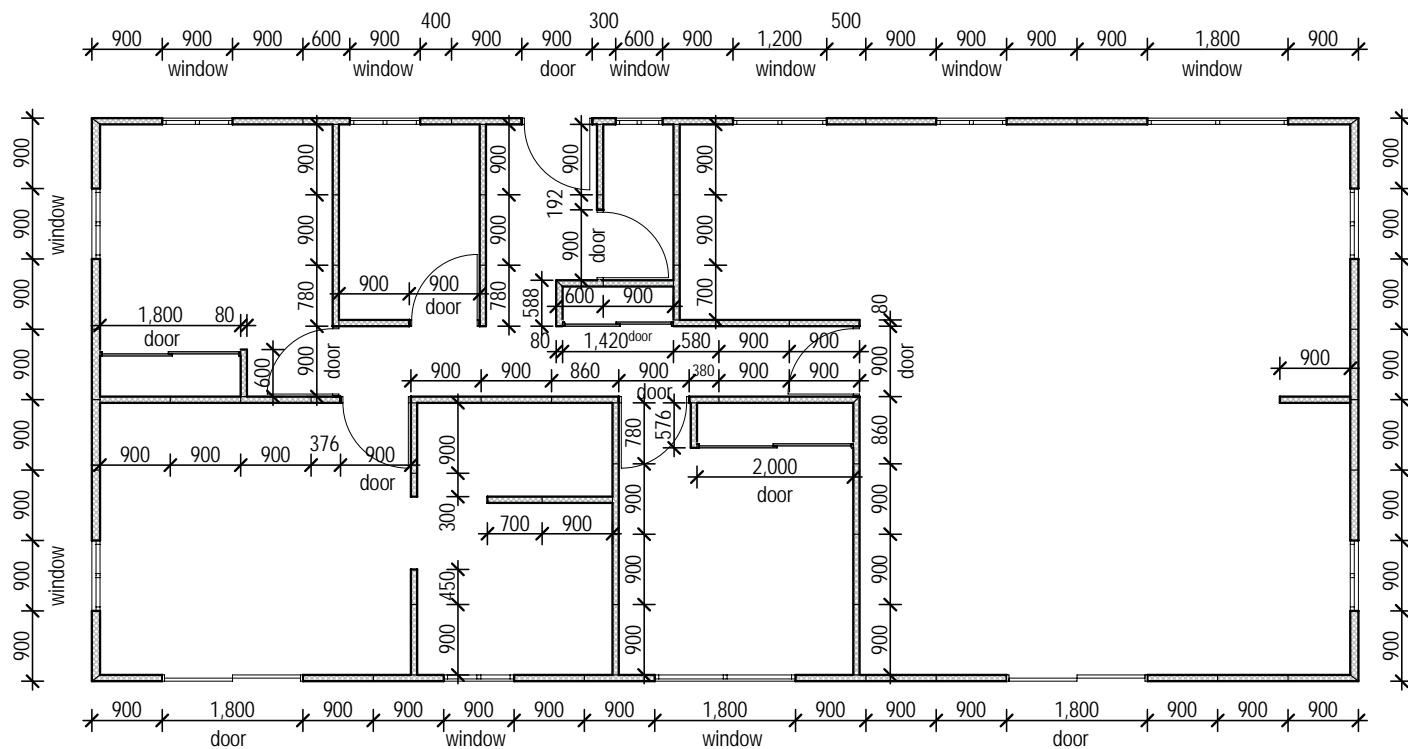
**PROPOSED OFFICE/DISPLAY HOUSE**  
NEW CALEDONIA

#	DESCRIPTION	DATE
P4	PRELIMINARY ISSUE, ENGINEERS DISC	20/12/09
P5	PRELIMINARY ISSUE,	13/01/10

**SECTIONS A-A**  
Scale AS SHOWN  
Date  
Drawn : CD  
Checked: TB



**FLOOR PANEL LAYOUT PLAN**  
SCALE 1:100



**WALL PANEL LAYOUT PLAN**  
SCALE 1:100

**PRELIMINARY**  
FOR DISCUSSION ONLY  
ISSUE DATE: 13/01/10

- GENERAL NOTES:**
- All drawings to be read in with reference to Australian Standards, engineer's specifications and manufacturer's literature where required.
  - All work to comply with the Queensland Building Act 1975, local codes & BCA
  - Figured dimensions take precedence, DO NOT SCALE. If in doubt, ASK
  - All enquiries & reports of inconsistencies to be directed through Ecohousing head office

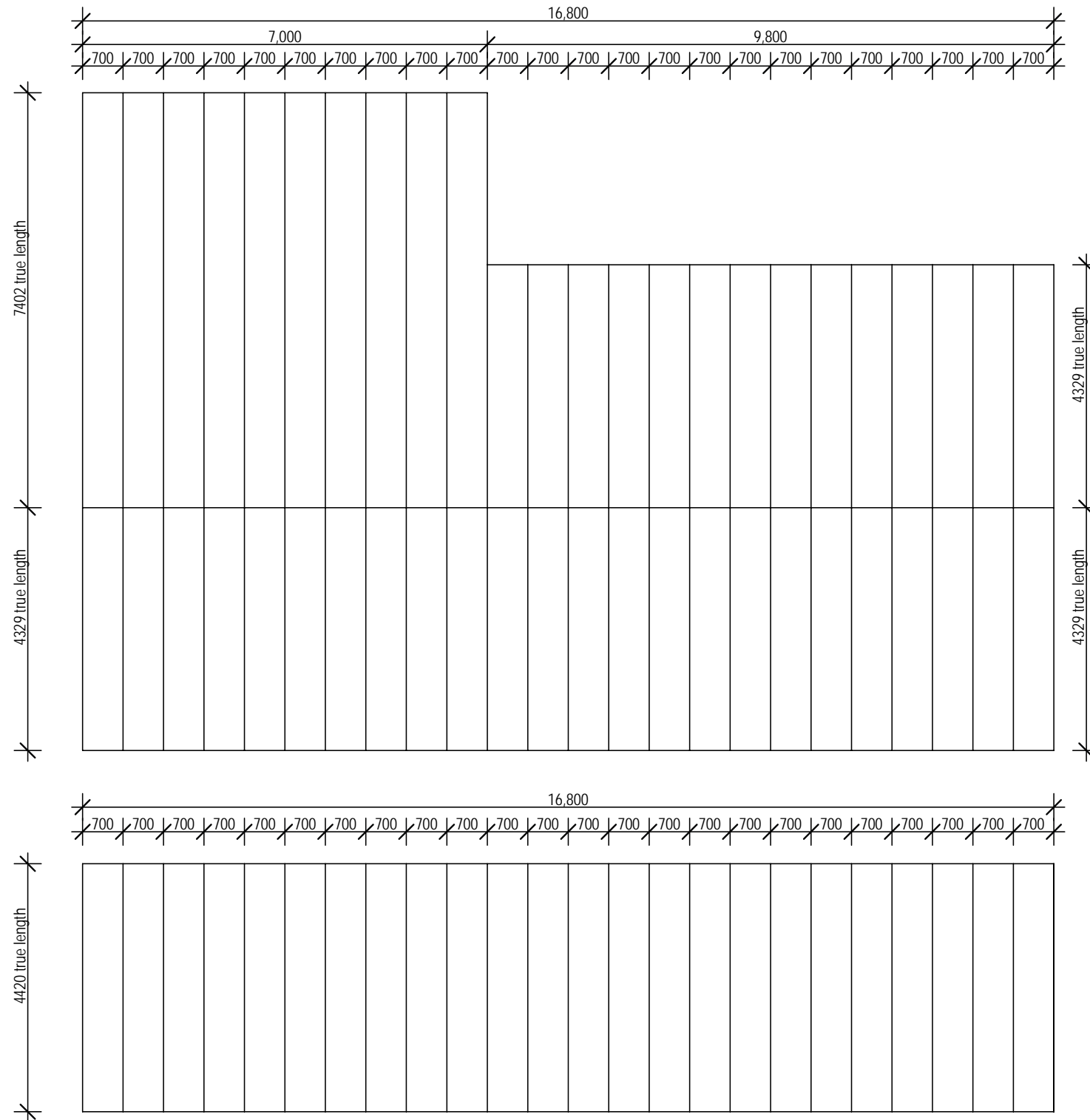


Goldchill Pty Ltd T/As Ecohousing  
PO Box 803 Maroochydore QLD 4558  
Ph: 07 5456 2111  
Fx: 07 54562666  
© 2006 Goldchill Pty Ltd

**PROPOSED OFFICE/DISPLAY HOUSE**  
NEW CALEDONIA

#	DESCRIPTION	DATE
P4	PRELIMINARY ISSUE, ENGINEERS DISC	20/12/09
P5	PRELIMINARY ISSUE,	13/01/10

**FLOOR & WALL PANEL PLAN**  
Scale AS SHOWN Drawn : CD  
Date Checked: TB



**ROOF PANEL LAYOUT PLAN**  
SCALE 1:100

**PRELIMINARY**  
FOR DISCUSSION ONLY  
ISSUE DATE: 13/01/10

- GENERAL NOTES:**
- All drawings to be read in with reference to Australian Standards, engineer's specifications and manufacturer's literature where required.
  - All work to comply with the Queensland Building Act 1975, local codes & BCA
  - Figured dimensions take precedence, DO NOT SCALE. If in doubt, ASK
  - All enquiries & reports of inconsistencies to be directed through Ecohousing head office



Goldchill Pty Ltd T/As Ecohousing  
PO Box 803 Maroochydore QLD 4558  
Ph: 07 5456 2111  
Fx: 07 54562666  
© 2006 Goldchill Pty Ltd

**PROPOSED OFFICE/DISPLAY HOUSE**  
NEW CALEDONIA

#	DESCRIPTION	DATE
P4	PRELIMINARY ISSUE, ENGINEERS DISC	20/12/09
P5	PRELIMINARY ISSUE,	13/01/10

**ROOF PANEL LAYOUT PLAN**  
Scale AS SHOWN Drawn : CD  
Date Checked: TB

## DOOR & WINDOW SCHEDULE -

NOTE : (X) DENOTES FIXED PANEL (O) DENOTES OPENING PANEL  
HEAD HEIGHT SHOWN IS HEIGHT ABOVE FLOOR LEVEL

### WINDOW SCHEDULE - GROUND FLOOR

W01	1209	SLIDING GLASS WINDOW, 2100 HEAD
W02	1209	SLIDING GLASS WINDOW, 2100 HEAD
W03	0609	SLIDING GLASS WINDOW, 2100 HEAD, OPAQUE GLASS
W04	1218	SLIDING GLASS WINDOW, 2100 HEAD
W05	1209	SLIDING GLASS WINDOW, 2100 HEAD
W06	1209	SLIDING GLASS WINDOW, 2100 HEAD
W07	1218	SLIDING GLASS WINDOW, 2100 HEAD
W08	1209	SLIDING GLASS WINDOW, 2100 HEAD
W09	0912	SLIDING GLASS WINDOW, 2100 HEAD
W10	0606	SLIDING GLASS WINDOW, 2100 HEAD
W11	0609	SLIDING GLASS WINDOW, 2100 HEAD, OPAQUE GLASS
W12	1209	SLIDING GLASS WINDOW, 2100 HEAD

### DOOR SCHEDULE

D01	2118	2 PANEL SLIDING GLASS DOOR
D02	2118	2 PANEL SLIDING GLASS DOOR
D03	2040	HIGH x 870 WIDE LHS SOLID CORE HINGED DOOR TOP THIRD GLAZED
D04	2040	HIGH x 870 WIDE LHS HOLLOW CORE HINGED DOOR
D05	2040	HIGH x 1800 WIDE 2 PANEL SLIDING ROBE DOOR
D06	2040	HIGH x 870 WIDE LHS HOLLOW CORE HINGED DOOR
D07	2040	HIGH x 870 WIDE LHS HOLLOW CORE HINGED DOOR
D08	2040	HIGH x 870 WIDE RHS HOLLOW CORE HINGED DOOR
D09	2040	HIGH x 1420 WIDE 2 PANEL SLIDING ROBE DOOR
D10	2040	HIGH x 870 WIDE RHS HOLLOW CORE HINGED DOOR
D11	2040	HIGH x 2000 WIDE 2 PANEL SLIDING ROBE DOOR
D12	2040	HIGH x 870 WIDE LHS HOLLOW CORE HINGED DOOR

**PRELIMINARY**  
FOR DISCUSSION ONLY  
ISSUE DATE: 13/01/10

**GENERAL NOTES:**

- All drawings to be read in with reference to Australian Standards, engineer's specifications and manufacturer's literature where required.
- All work to comply with the Queensland Building Act 1975, local codes & BCA
- Figured dimensions take precedence, DO NOT SCALE. If in doubt, ASK
- All enquiries & reports of inconsistencies to be directed through Ecohousing head office



Goldchill Pty Ltd T/As Ecohousing  
PO Box 803 Maroochydore QLD 4558  
Ph: 07 5456 2111  
Fx: 07 54562666  
© 2006 Goldchill Pty Ltd

**PROPOSED OFFICE/DISPLAY HOUSE**  
NEW CALEDONIA

	#	DESCRIPTION	DATE
REVISIONS	P4	PRELIMINARY ISSUE, ENGINEERS DISC	20/12/09
	P5	PRELIMINARY ISSUE,	13/01/10

**DOOR & WINDOW SCHEDULE**  
Scale AS SHOWN      Drawn : CD  
Date                              Checked: TB